



FRONT RUNNER

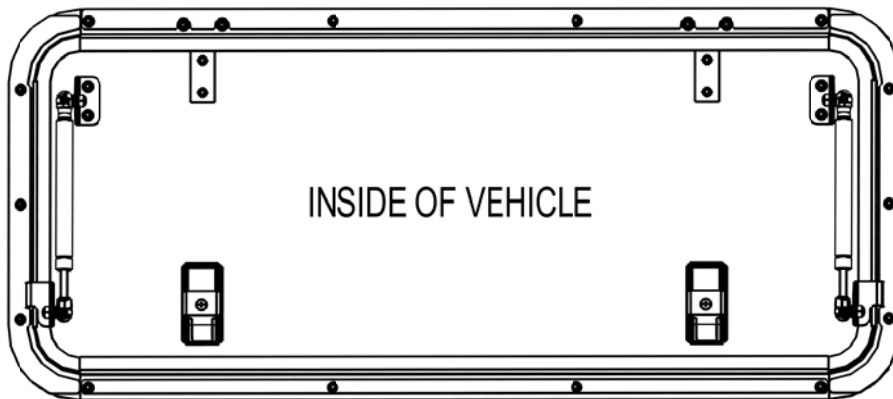
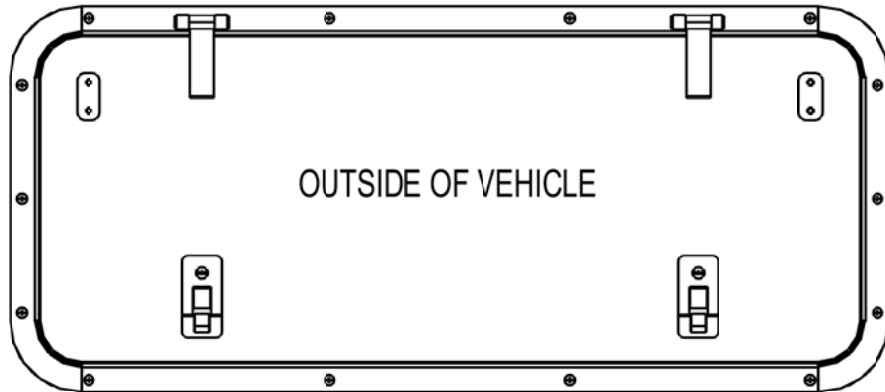
**LAND ROVER DEFENDER
90/ 110/ TDI/ TD5/ PUMA
GLASS GULLWING DOOR**

ENG

GWLD006



INSTALL TIME: 3 Hours



IMPORTANT WARNING!

IT IS CRITICAL THAT ALL FRONT RUNNER PRODUCTS BE PROPERLY AND SECURELY ASSEMBLED AND ATTACHED TO YOUR VEHICLE. IMPROPER ATTACHMENT COULD RESULT IN AN AUTOMOBILE ACCIDENT, AND COULD CAUSE SERIOUS BODILY INJURY OR DEATH TO YOU OR TO OTHERS. YOU ARE RESPONSIBLE FOR ASSEMBLING AND SECURING ALL FRONT RUNNER PRODUCTS TO YOUR VEHICLE, CHECKING THE ATTACHMENTS PRIOR TO USE, AND PERIODICALLY INSPECTING THE PRODUCTS FOR ADJUSTMENT, WEAR, AND DAMAGE. THEREFORE, YOU MUST READ AND UNDERSTAND ALL OF THE INSTRUCTIONS AND CAUTIONS SUPPLIED WITH YOUR FRONT RUNNER PRODUCT PRIOR TO INSTALLATION OR USE. IF YOU DO NOT UNDERSTAND ALL OF THE INSTRUCTIONS AND CAUTIONS, OR IF YOU HAVE NO MECHANICAL EXPERIENCE AND ARE NOT THOROUGHLY FAMILIAR WITH THE INSTALLATION PROCEDURES, YOU SHOULD HAVE THE PRODUCT INSTALLED BY A PROFESSIONAL INSTALLER OR OTHER QUALIFIED PERSONNEL.

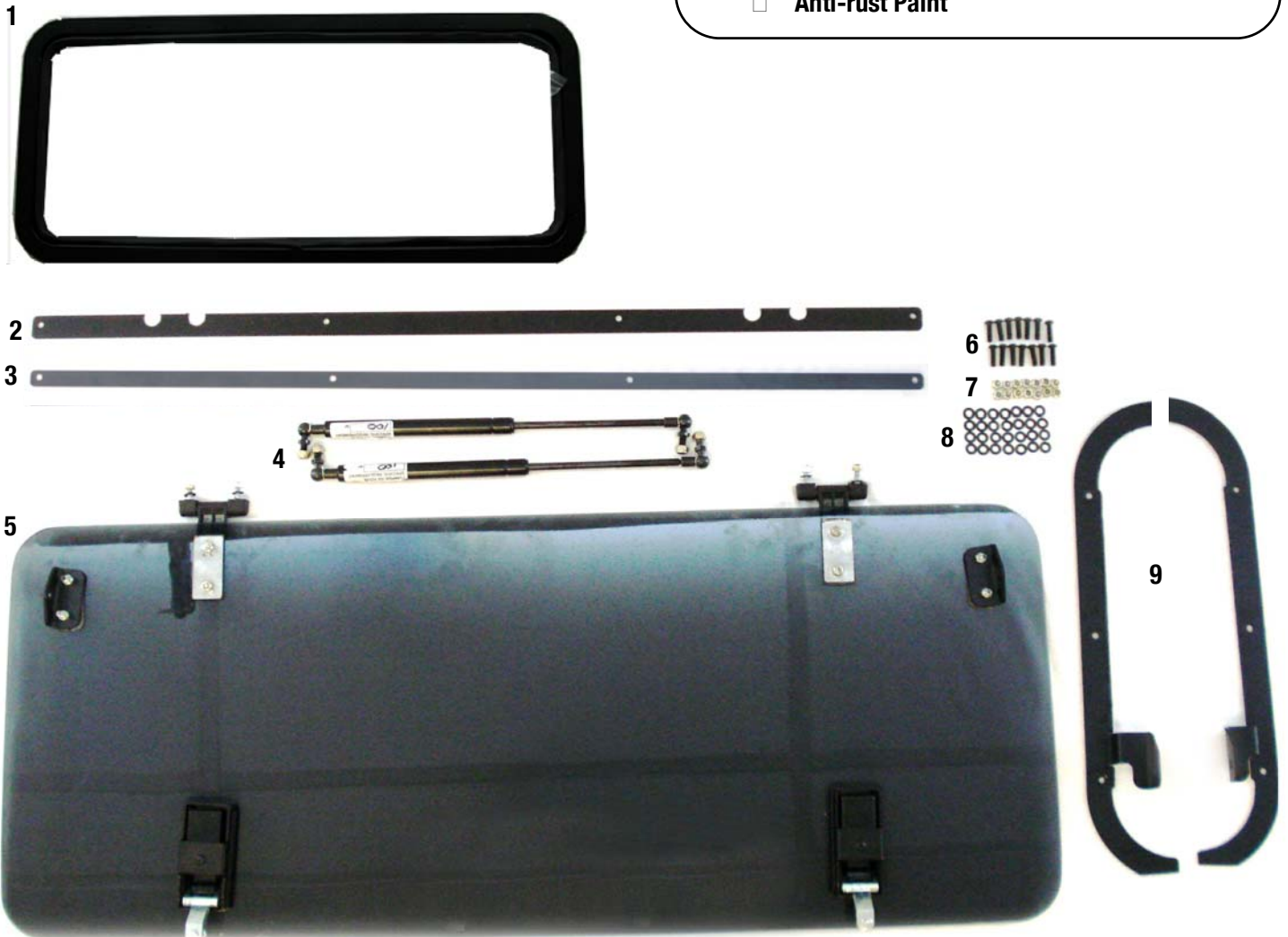
1 GET ORGANIZED...

Here is what you are looking at:

Item #	Quantity	Description
1	1	OUTER FRAME
2	1	INNER BRACKET - TOP
3	1	INNER BRACKET - BOTTOM
4	2	GAS STRUT
5	1	GLASS DOOR ASSEMBLY
6	18	M6 x 20 BUTTON HEAD BOLT
7	18	M6 NYLOC NUT
8	28	M6 FLAT WASHER
9	2	INNER BRACKET - 1 LEFT, 1 RIGHT
10	4	M8 NUT CAP

You will need:

- Land Rover Defender
- 10 mm Flat Wrench and Socket Wrench
- Drill Machine
- 6.5 mm Drill Bit
- 13 mm Flat Wrench and Socket Wrench
- 12 mm Flat Wrench
- 4 mm Hex Key
- Putty Knife
- Masking Tape
- Steel File
- Methylated spirits/Denatured Alcohol
- Exterior Grade Black Silicone Sealant
- Friend
- Clean dry area near your Land Rover
- Anti-rust Paint

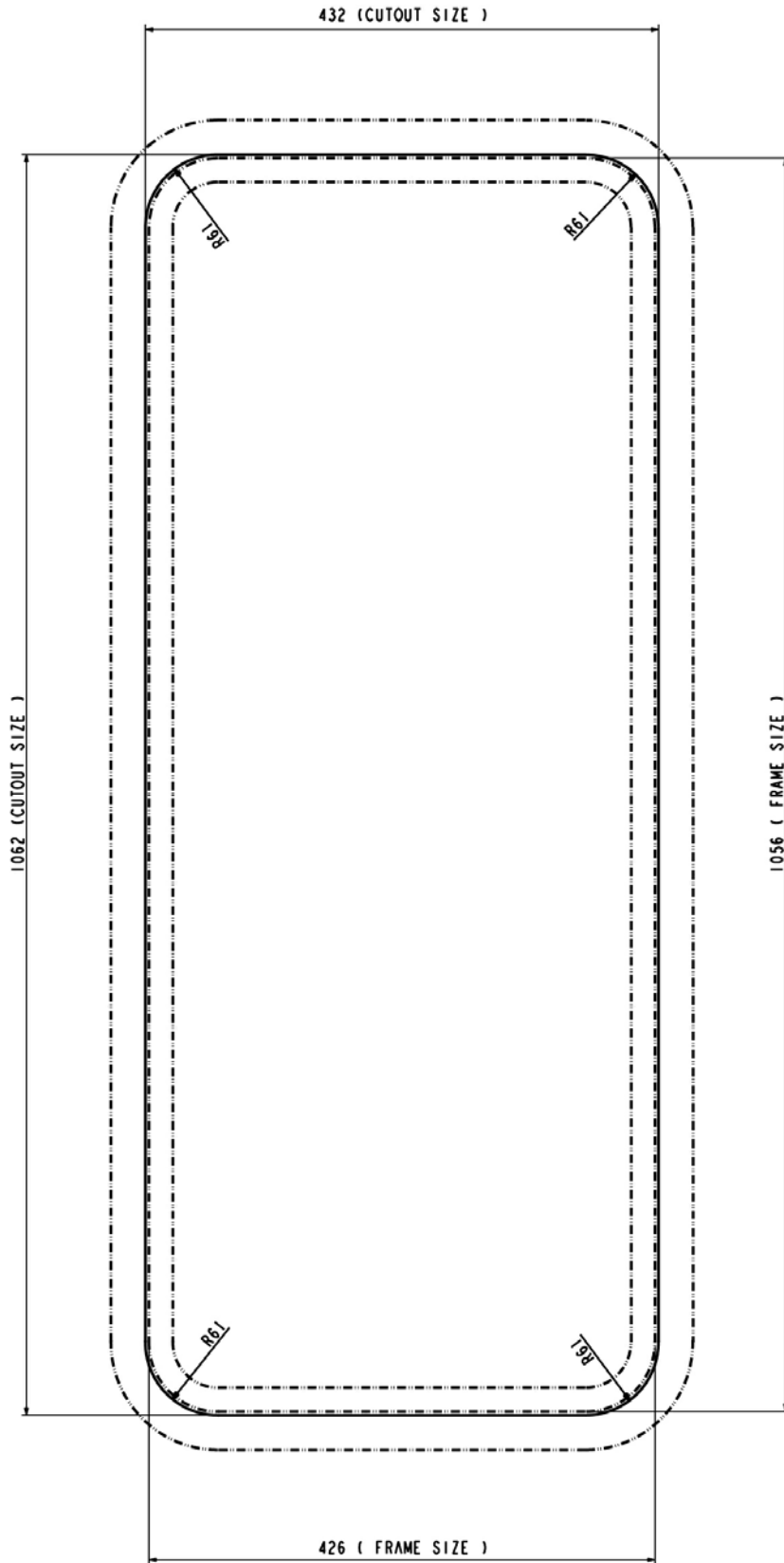


(A) Familiarize yourself with the parts and then step away from the work area and read through these instructions from beginning to end. Grab a cup of coffee and take a moment. A little prep now may save you a lot of time later.

2

CUTOUT DETAIL

(A) For Defender models without rear side windows or Defender double cab pick-up models with a canopy.



3 REMOVE THE WINDOW AND DRILL MOUNTING HOLES



NOTE: On older model defenders, remove the outer plastic strip covering the rivets on the original window, drill out the rivets and remove the original window.

- (A) Remove the interior panels (window housing) by pulling to release their clips. Start with the two rear panels either side of the rear door, followed by the side panels.

Remove the plastic window retaining clips by sliding them out towards the corners.

- (B) Tape around the outside of the windows using masking tape as seen. (This is done to protect the paint work during the following step.)



- (C) Using a putty knife, cut the sealing tape/silicone holding the window in place. Start at the bottom of the window. Have your friend push against the window from the inside of the vehicle while cutting. Once the tape/silicone has been cut all the way around remove the window.

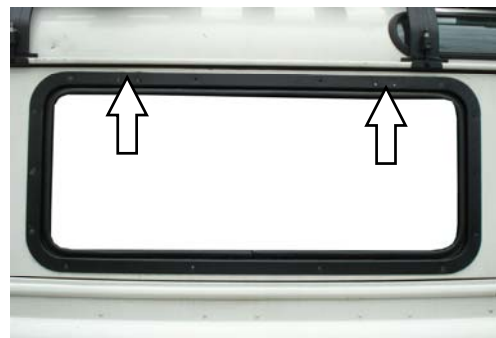
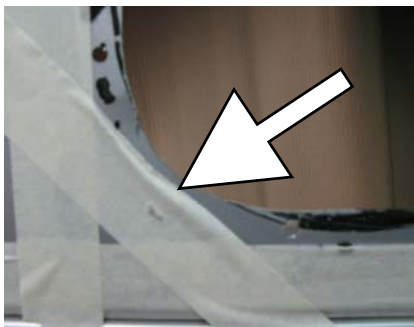


- (D) Remove the Glass with its Hinges from the Gullwing Frame as you will use the frame as a template in Step 2E

- (E) File the corners of the window opening to fit the frame. Check fitment by locating the Frame into the window opening making sure that the four hinge holes, as indicated by the arrows, are at the top.

With the Frame fitted as a template, drill all the holes to 6.5mm. Have a friend on the inside of the vehicle to push/support from the inside as you drill.

Remove the frame and clean the area around the window opening using methylated spirits/ denatured alcohol or other appropriate solvent. Treat the filed area with anti-rust.



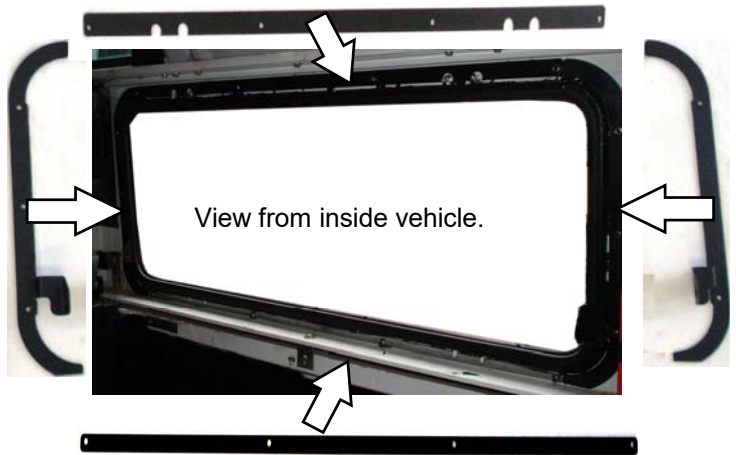
4 FIT THE FRAME

- (A) Place a bead of silicone sealant all the way around the inside of the Outer Frame as indicated by the white line below. Ensure the bead sits on the outside of the holes to ensure a waterproof seal.



- (B) Using the Inner Brackets (Items 2, 3 & 9) as shown, secure the Outer Frame to the vehicle using the M6x20 Button Head Bolts, M6 Flat Washers and M6 Nyloc Nuts supplied (Items 6, 7, 8). The Nyloc Nuts go to the inside of the vehicle.

Make sure not to fasten through the four hinge holes as indicated in Step 2D.



5 FIT THE DOOR ASSEMBLY AND GAS STRUTS

- (A) With the help of your friend secure the Hinges and Glass Door Assembly to the vehicle using four M6 Nyloc Hex Nuts (Item7)

- (B) Fasten the two Gas Struts to the Mounting Brackets on the Glass Door as shown. Place a M8 Nut cap (Item10) over the nyloc nuts.



- (C) Fasten the other end of the Gas Struts to the Inner Side Brackets as shown. Place a M8 Nut cap (Item10) over the nyloc nuts.



4 FIT THE DOOR ASSEMBLY AND GAS STRUTS CONT...

- (D) The nut and bolt system as indicated by the arrow allows you to adjust the door lock tension on the frame to align the door appropriately.



- (E) Refit the interior trim.



Congratulations, you have completed your installation. Take a step back and admire your work. Good Job!

5 INSTALL OTHER VEHICLE AND RACK ACCESSORIES

- (A) Now's the time to visit your favorite Front Runner dealer in person or online.